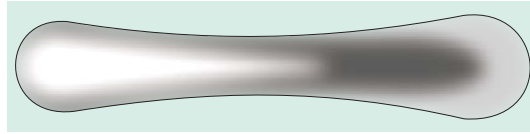


Lid Guard

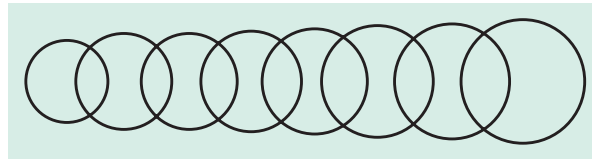
Flat large instrument that has a groove and is placed between the lid and globe of the eye to provide a solid support for eyelid surgery.



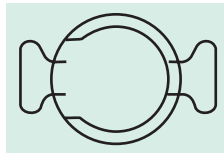
Jaeger lid plate

Fixation Rings

These are round rings used for fixing the globe for various surgeries.



Fleiringa scleral fixation rings



Goldmann scleral fixation rings



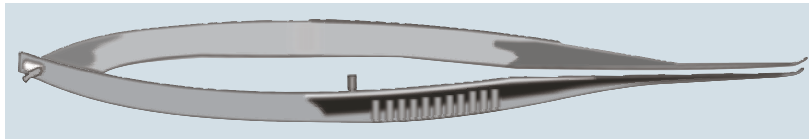
Shepard fixation ring for clear corneal incision



Thompson globe fixation ring

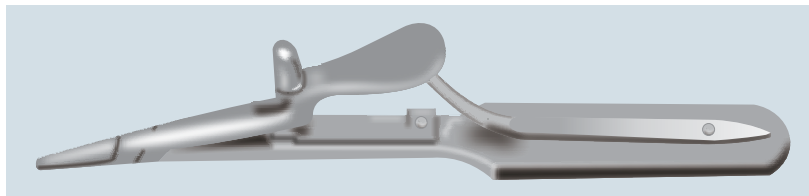
NEEDLE HOLDER

- Holding the needle in position while applying sutures.
- Silcock's needle holder has a catch and is used for heavier gauge needles.
- Used mainly for skin, muscle and corneal incisions.

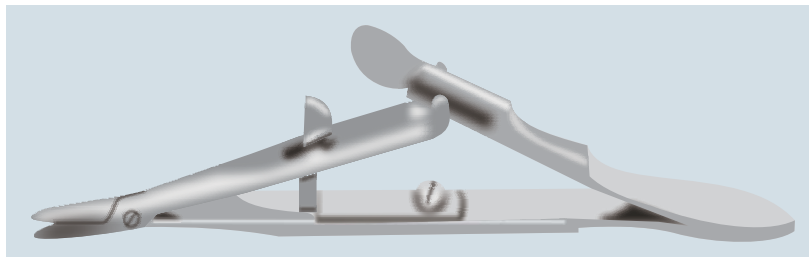


Arruga's Needle Holder

- Has a catch (lock) and is used for heavier gauge needles (thicker than 6-0).
- Used mainly for skin and muscle incisions.



Other Heavy Needle Holders

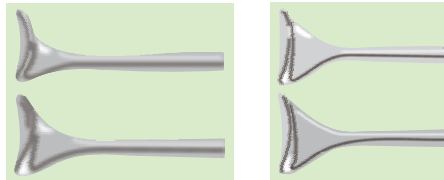
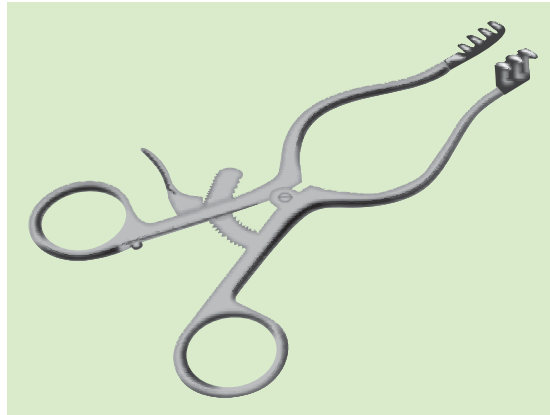


Kalt needle holder

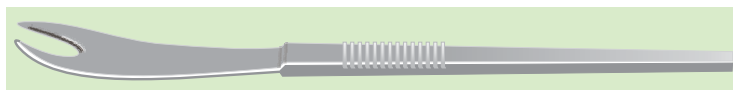
- The limbs are kept in a retracted position with the help of a fixing screw.

Uses

- It is used to retract the skin during surgery on the lacrimal sac [e.g. dacryocystectomy (DCT) or dacryocystorhinostomy (DCR)].



Desmarres lid retractors with solid blades



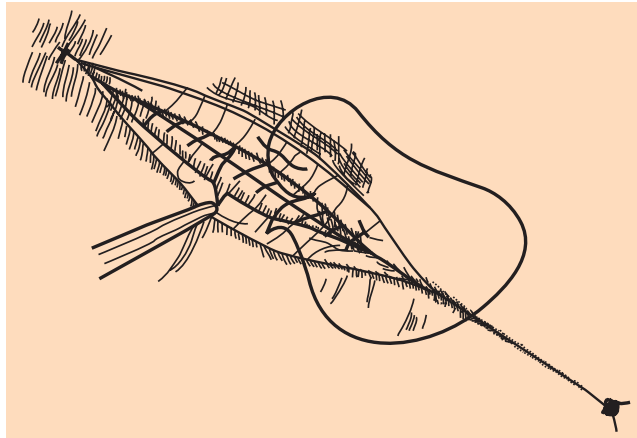
Schepens forked orbital retractor



Helveston tissue retractor with thin curved blades

Absorbable sutures

- Internal
- Intradermal/subcuticular
- Rarely on skin



Non-absorbable suture

- Primarily skin: Needs to be removed later.
- Stainless steel = exception: Can be used internally.

